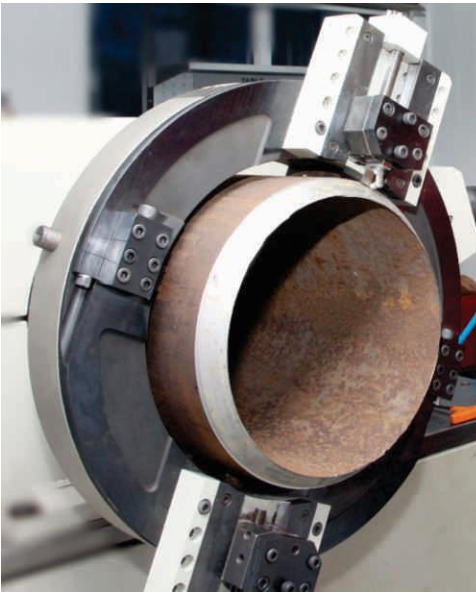




ROBOTIC TOOLS
SOUTH PACIFIC
SMARTER TOOLS



Tools for every conceivable need.....

www.robotictools.com.au

CONTAINERISED TOOL ROOM

Robotic Tools will set-up & Maintain tool room in a container or shed at your works.

- Ready to use set up in 20 feet or 40 feet container.
- A 20 feet container contains 20 sets of Torquing and Tensioning tools. A 40 feet container contains 40 sets of Torquing and Tensioning tools.
- Contain torquing and tensioning tools and In-situ machining tools as per specific nature of work. BRAND
- NEW TOOLS MOBILISED to set up the tool room.
- Tool, 100% uptime with Robotic Tools support hence tools down time not any issue.
- Significant financial benefit over traditional business models.
- Servicing and upkeep direct by the manufacturer team.



Direct advantages to customer:

- Since maintenance is by Robotic Tools, there is - No worry of costly spares and repairs.
- Tools always with you at your premises hence – no need of additional work to co-ordinate and then mobilize existing vendors
- Faster and efficient crew selection through mobile app.
- The client will have access to our engineering resources and software
- When tools are not in use for the partner – Robotic Tools and the client can determine work relationships in theregion to deploy the tools. In this event revenue is shared as per agreed terms.
- The client has captive access and priority to the tools for future shutdowns / outages.
-

TOOL ROOM STOCK

Robotic Tools South Pacific can deliver the largest rental fleet of Tools & Equipment

At Robotic Tools, we specialize in creating customized capabilities for any bolting job, which is why we have huge stock.

All our rental products are carefully inspected on a regular basis to ensure they meet both our stringent performance criteria and your critical requirements.

In addition to the extensive range of products available for hire and rental, Robotic Tools also keeps a large rental stock of bolting equipment's.

Please confirm your application to propose customized stock inventory for your Tool Room setup



Rental fleet

Almost all hydraulic and pneumatic torque wrenches, pumps, hoses and drives that we have available to rent, from the smallest to the largest sizes. Our rental service is not limited to torque wrenches and pumps as we also have other products available to rent, such as Back-Up wrenches, nut splitters, flange spreaders, pipe cutting and beveling machines.

Average Inventory for immediate mobilization:

- Hydraulic Torque Wrenches - 400 nos.
- Bolting Tensioners - 1000 nos.
- Hydraulic Spreaders - 50 nos.
- Flange Facing Machine - 30 nos.
- Pipe Cutting and Beveling Machines - 30 nos.
- Hydraulic Torque Wrench Pumps - 200 nos.
- Bolting Tensioners Pumps - 100 nos.
- Nut Splitters - 50 nos.
- Pneumatic Torque Wrenches - 50 nos.

Supplied with a valid calibration certificate, as required/applicable.

Robotic Tools also Provide RFID tagging services to our customers against conventional metallic tagging. Whenever the job is done by our crew it is at no additional charges if required for Flange management services at plant.

It not only makes it fast and easy to monitor and trace record of specific Joints. Compliance of inspection and recording time of system gets completed faster and gives a fail proof method for inspection of Joint tagging.



RFID System can help you:

- A. To computerize the joint record and management.
- B. Easy identification and location tracing of specific joint.
- C. Inspection and safety compliance being digitally recorded.
- D. Easy history tracing of a joint.